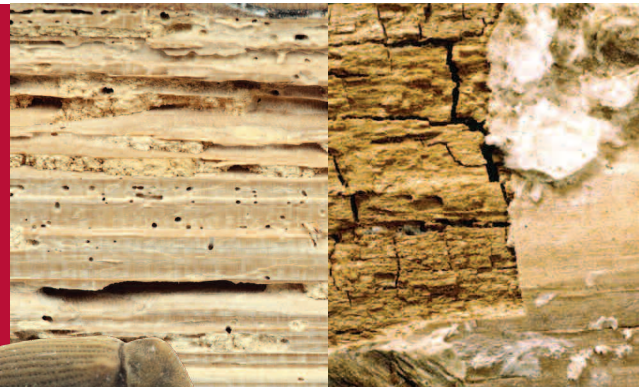




## L I G N U M P R O D 1 5 6 F U N G I C I D E & I N S E C T I C I D E

Professional concentrated product containing an insecticide & fungicide combination to eradicate and prevent attack by wood boring beetles and prevent wood destroying & discolouring fungi.

Lignum Pro timber treatments offer solutions to the professional user of timber treatment products under the new European Biocidal Products Regulations. This range of concentrated products offer the convenience and the flexibility required by the professional user whilst ensuring superior product performance backed by efficacy



**Lignum Pro D156** is a dual purpose (fungicide/insecticide) treatment based on microemulsion technology which produces a formulation with a particle size in the nanometre range. This tiny particle size allows the formulation to penetrate deep into the timber in order to deliver the active ingredient (a combination of insecticide & fungicide) to prevent or eradicate insect attack and to prevent fungal decay and staining.

**Lignum Pro D156** is effective against a wide range of wood rotting fungi [both wet rot and dry rot] whilst the pyrethroid insecticide is effective against all life stages of wood boring insects. It has virtually no odour and can be applied either by brush or low pressure spray to provide long lasting protection. The formulation is water-based producing a non-flammable, quick drying product containing no volatile organic compounds (VOCs). The concentrated product is diluted with water.

- **BS EN Certification**
- **Kills active wood boring insect attack and prevents re-infestation**
- **Prevents fungal decay and blue stain**
- **Microemulsion water based formulation**
- **Zero VOC's**
- **Quick drying**
- **Non flammable**

### The Actives

**Permethrin 31.25g/L:** A commonly used pyrethroid insecticide which has excellent efficacy against a wide range of wood boring insects.

**Propiconazole 93.75g/L:** A triazole fungicide, which has excellent efficacy against a range of wood destroying fungi.

**IPBC (3-Iodo-2-Propynyl Butyl Carbamate) 31.25g/L:** a carbamate fungicide which is added to improve the efficacy envelope even further providing excellent efficacy against a range of wood staining fungi.

The active ingredients in the formulation are sourced from and supplied by manufacturers who have supported their compounds through the Biocidal Products Directive [98/8 EC] or more recently the Biocidal Products Regulations [528/2012] and in compliance with Article 95 of the Biocidal Products Regulation.

**Lignum Pro D156** is being supported under the European Biocidal Products Regulation [528/2012]. Efficacy of this product has been proven to industry established and European standards.

HSE 9895  
PCS 98337



# LIGNUM PRO D156 FUNGICIDE & INSECTICIDE

Efficacy Certification				
CERTIFIED	ORGANISM	USE	DILUTION	RATE
BS EN 46	House Longhorn Beetle (Hylotrupes Bajulus)	Preventative	1+24	200ml/m <sup>2</sup>
BS EN 113	White & Brown Rot (Wood destroying basidiomycetes)	Preventative	1+24	200ml/m <sup>2</sup>
BS EN 46	House Longhorn Beetle (Hylotrupes Bajulus)	Preventative	2+23	100-200ml/m <sup>2</sup>
BS EN 113	White & Brown Rot (Wood destroying basidiomycetes)	Preventative	2+23	100-200ml/m <sup>2</sup>
BS EN 118	Termites (Reticulitermes Flavipes)	Preventative	2+23	200ml/m <sup>2</sup>
BS EN 152	Blue Stain	Preventative	2+23	200ml/m <sup>2</sup>
BS EN 370	Common Furniture Beetle (Anobium Punctatum)	Curative	1+24	300ml/m <sup>2</sup>
BS EN 1390	House Longhorn Beetle (Hylotrupes Bajulus)	Curative	1+24	300ml/m <sup>2</sup>

## Technical Characteristics :

**Hazard class:** Class 1, 2 & 3\*

\*Timbers in hazard class 3 must be over coated with a weather proof finish to prevent leaching of active ingredient into the environment.

**Pre-Application:** Wood should be clean and free from wood dust and other contaminants.

**Application:** Low pressure spray or brush.

**Coverage:**

1L + 24L water : 200ml/m<sup>2</sup> (1L per 5m<sup>2</sup>)

2L + 23L water : 100 - 300ml/m<sup>2</sup> (1L per 3.3 - 10m<sup>2</sup>)

\*1L of concentrate treats 82.5 - 250m<sup>2</sup> of timber depending on use.

**Drying:** Product is touch dry in 1 hour depending on wood and ambient conditions. Unprotected persons and animals should be kept away from treated surfaces for 48 hours or until dry.

**Finish:** Product does not have a finish and leaves the same effect as applying water or solvent. It is always advisable to try on a small inconspicuous area before application to ensure product finish is as expected.

**Over Coating:** Product should be suitable for over coating 24 hours after application depending on wood and ambient conditions.

**Clean Up:** Rinse out spray equipment and save washings for use as diluents next time product is used. Remove most of product from brushes with tissue and wash brush with soap and clean water.

**Stability:** Product is stable in original packaging for 2 years when

stored under ambient conditions. After 2 years product should be re-tested every 6 months to ensure active ingredient levels are within specification.

**Packaging:** 1L HDPE bottles. 10 x bottles per case. 50 x cases per pallet.

**Storage:** Protect from frost. Store between 5 and 40°C. Store in original container.

Store away from food and/or feedstuffs.

**Disposal:** Dispose of waste product and contaminated packaging via a licensed waste disposal contractor.

Empty packaging should be rinsed out and be rendered useless by slitting and then placed in normal waste disposal.

**Hazardous waste key:** 020108 - Agrochemical waste containing dangerous substances.

**Classification & Labelling (1272/2008/EC) :**

Signal word: Danger

Harmful if swallowed.

Causes serious eye damage.

May cause allergic reaction.

May cause damage to organs (larynx) through prolonged or repeated exposure.

Very toxic to aquatic life with long lasting effects.

**Use biocides safely.  
Always read the label first.**



For more information visit  
[www.lignumtimbertreatment.co.uk](http://www.lignumtimbertreatment.co.uk)  
or call us on +44 (0)1332 362492

Lignum Timber Treatment\* is a registered trademark of Enviroquest Research Ltd in the United Kingdom.

Lignum Timber Treatment Products are registered and manufactured in the United Kingdom.

Distributor: